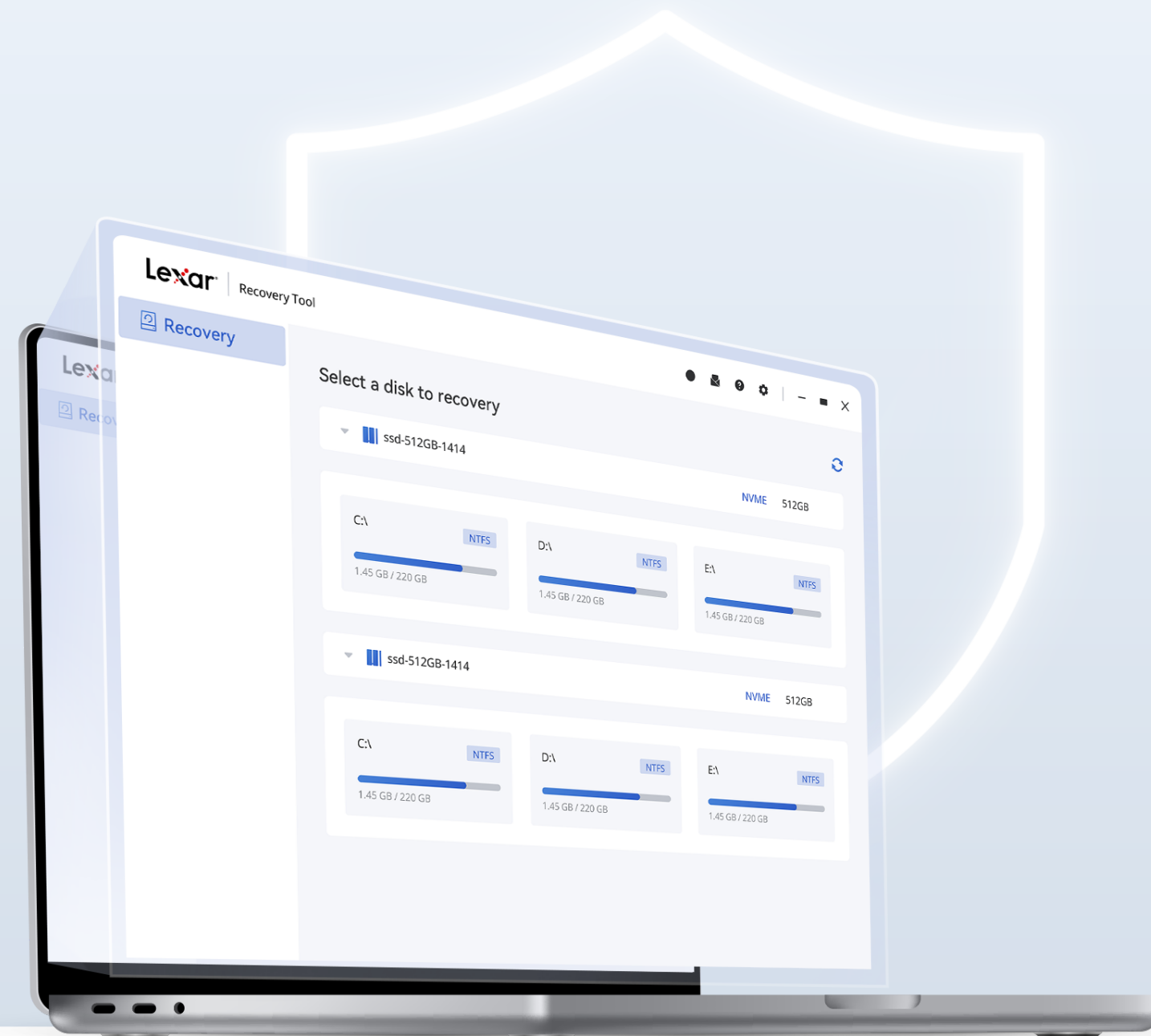


User Guide



Lexar
Recovery Tool



Contents

1. About Lexar Recovery Tool
2. Download and Installation
3. How to Recovery Data

4. How to Update the Software
5. How to Change Software Settings
6. Compatibility

7. Solutions for Issues

1、 About Lexar Recovery Tool

Lexar Recovery Tool is a data recovery software provided by Lexar to assist users in protecting and recovering important data. As a renowned storage device manufacturer, Lexar offers this software to help users deal with accidental loss, deletion, or damage of files. With Lexar Recovery Tool, users can recover data from storage media, ensuring the security and reliability of your information.

2、 Download and Installation

Please download the Lexar Recovery Tool from Lexar's official website

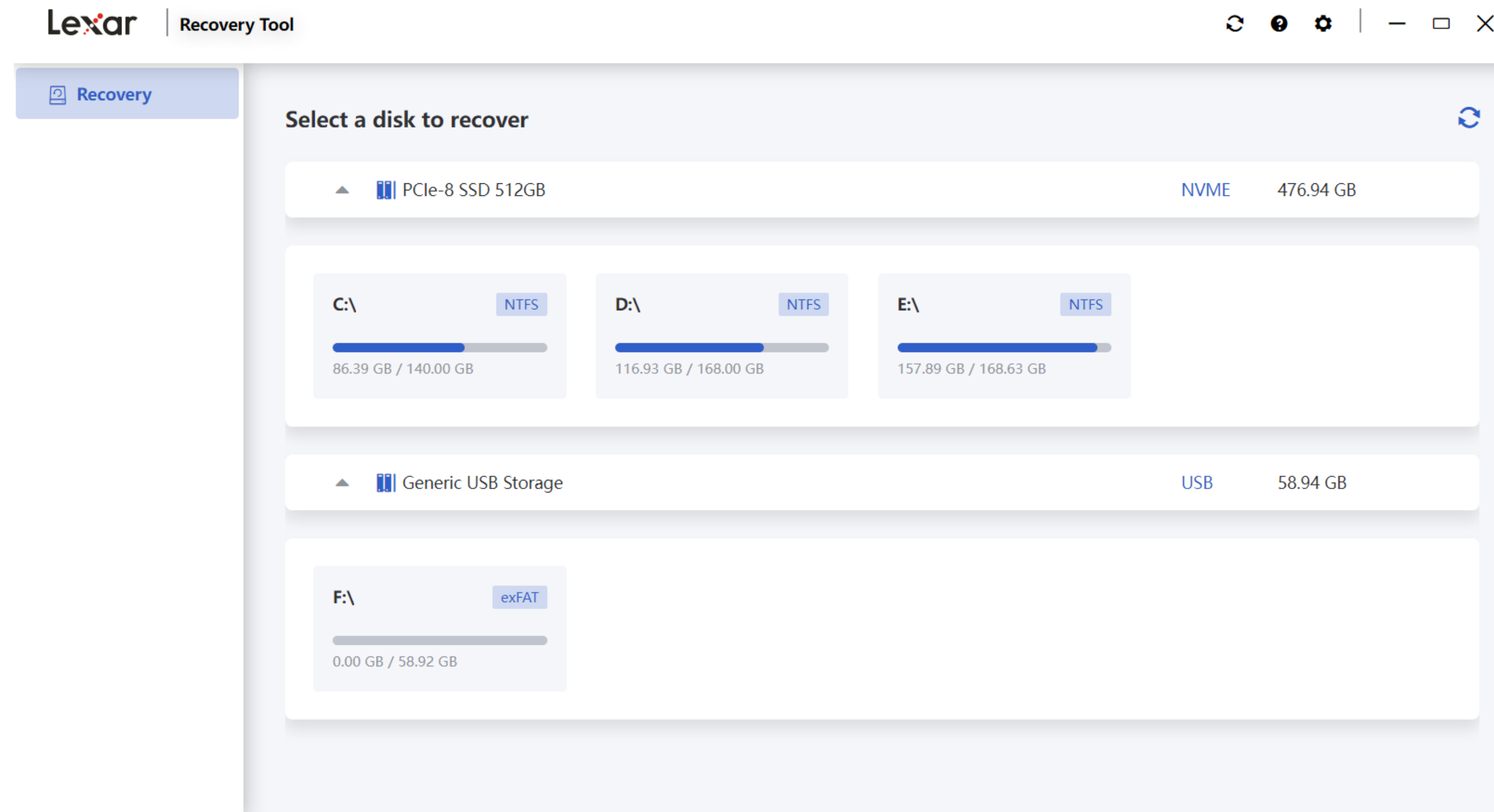
1. You can find the Lexar Recovery Tool installer on the Downloads list on your browser. Click on the installer and click Install on the pop-up window to start to install Lexar Recovery Tool. Typically, it is an .exe (for Windows) or .dmg (for Mac).
2. Follow the instructions to complete the installation process of the Lexar Recovery Tool. You may need to read and accept the agreement, select the installation location, and choose other relevant options.
3. Once the installation is complete, you can find a shortcut or launch icon for the Lexar Recovery Tool in your system.



⚠ Note: Note: Do not install the program on a disk where data loss has occurred to avoid overwriting data that cannot be recovered.

3、 How to Recover Data

1. Insert the removable storage devices (such as a memory cards, USB flash drives, and SSDs). The tool will automatically recognize the inserted Lexar storage device and display it in the disk list.



2. Please select the disk you would like to recover and click the scan button to scan.

The screenshot shows the 'Select a disk to recover' interface of the Lexar Recovery Tool. It features a sidebar with a 'Recovery' button. The main area displays several storage options:

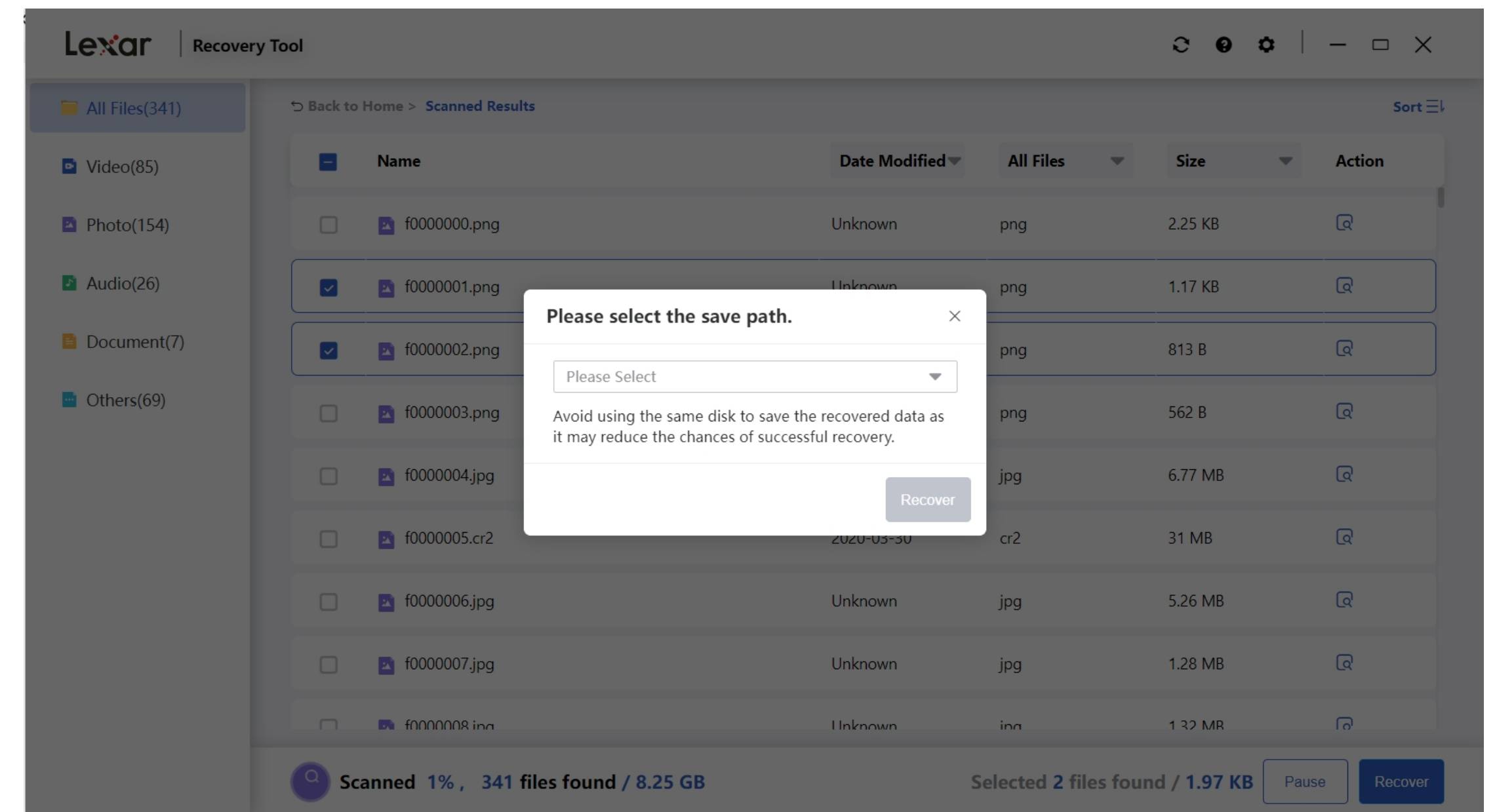
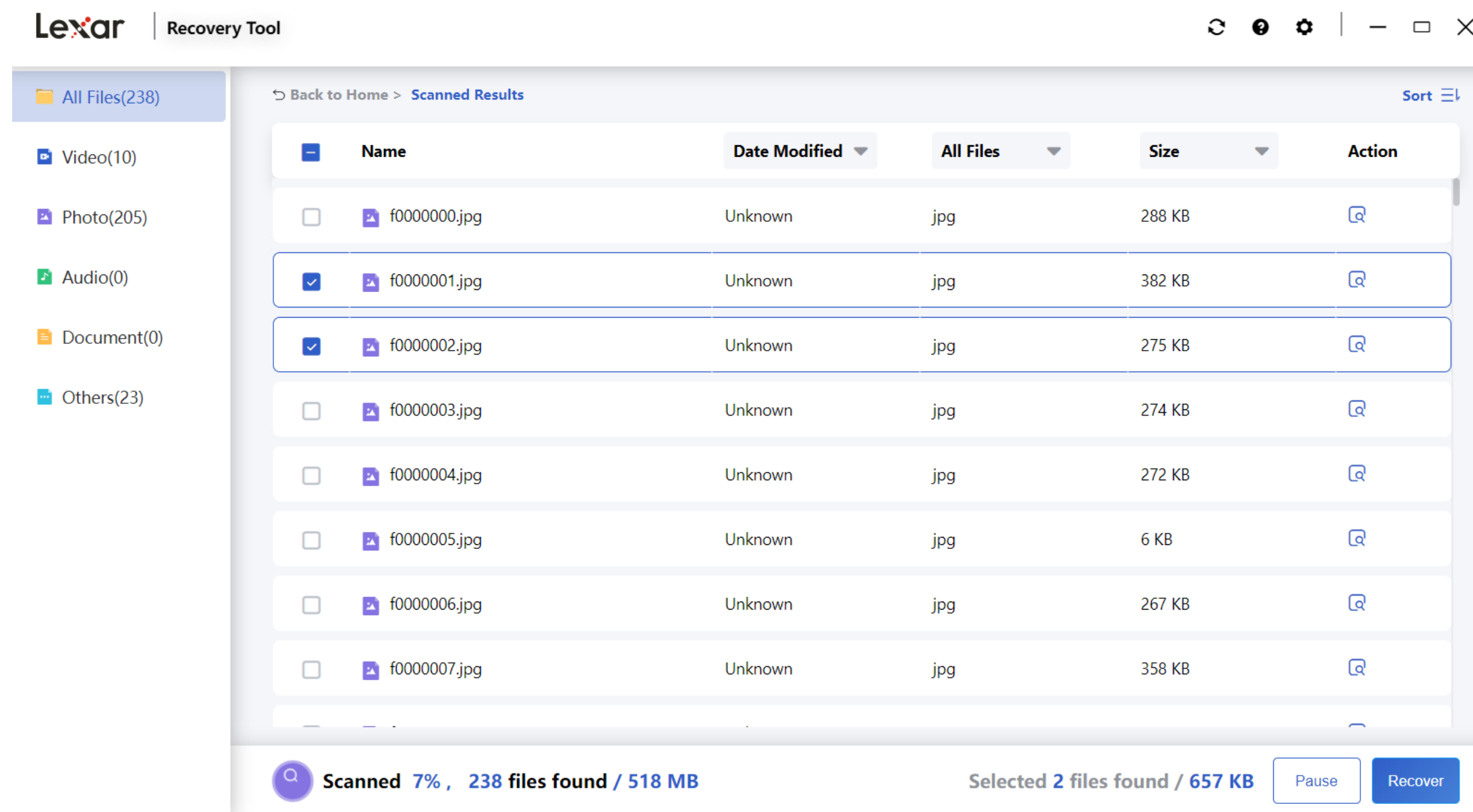
- PCIe-8 SSD 512GB** (NVME, 476.94 GB)
- C:** (NTFS, 86.42 GB / 140.00 GB)
- D:** (NTFS, 116.93 GB / 168.00 GB)
- E:** (NTFS, 157.89 GB / 168.63 GB)
- Generic USB Storage** (USB, 58.94 GB)
- F:** (exFAT, 0.00 GB / 58.92 GB) with a **Scan** button.

The screenshot shows the 'Scanned Results' interface of the Lexar Recovery Tool. It displays a list of files found during the scan:

<input type="checkbox"/>	Name	Date Modified	All Files	Size	Action
<input type="checkbox"/>	f0000000.jpg	Unknown	jpg	288 KB	
<input type="checkbox"/>	f0000001.jpg	Unknown	jpg	382 KB	
<input type="checkbox"/>	f0000002.jpg	Unknown	jpg	275 KB	
<input type="checkbox"/>	f0000003.jpg	Unknown	jpg	274 KB	
<input type="checkbox"/>	f0000004.jpg	Unknown	jpg	272 KB	
<input type="checkbox"/>	f0000005.jpg	Unknown	jpg	6 KB	
<input type="checkbox"/>	f0000006.jpg	Unknown	jpg	267 KB	
<input type="checkbox"/>	f0000007.jpg	Unknown	jpg	358 KB	

At the bottom, a progress bar indicates: **Scanned 4%, 238 files found / 518 MB**. There are also buttons for **Pause** and **Recover**.

3. Select the files you want to recover, then click the "Recover" button. Choose the destination path to save the recovered data.



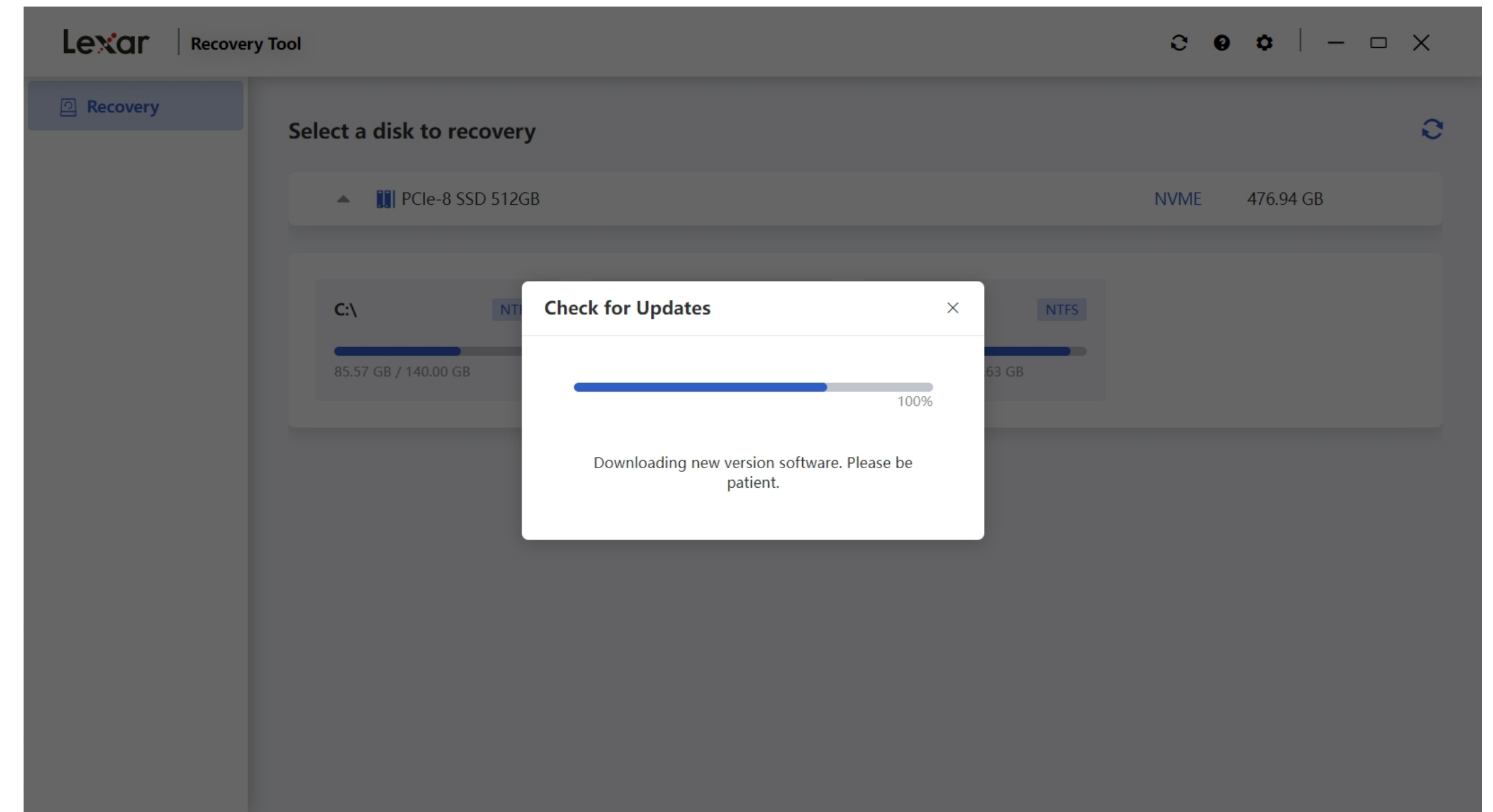
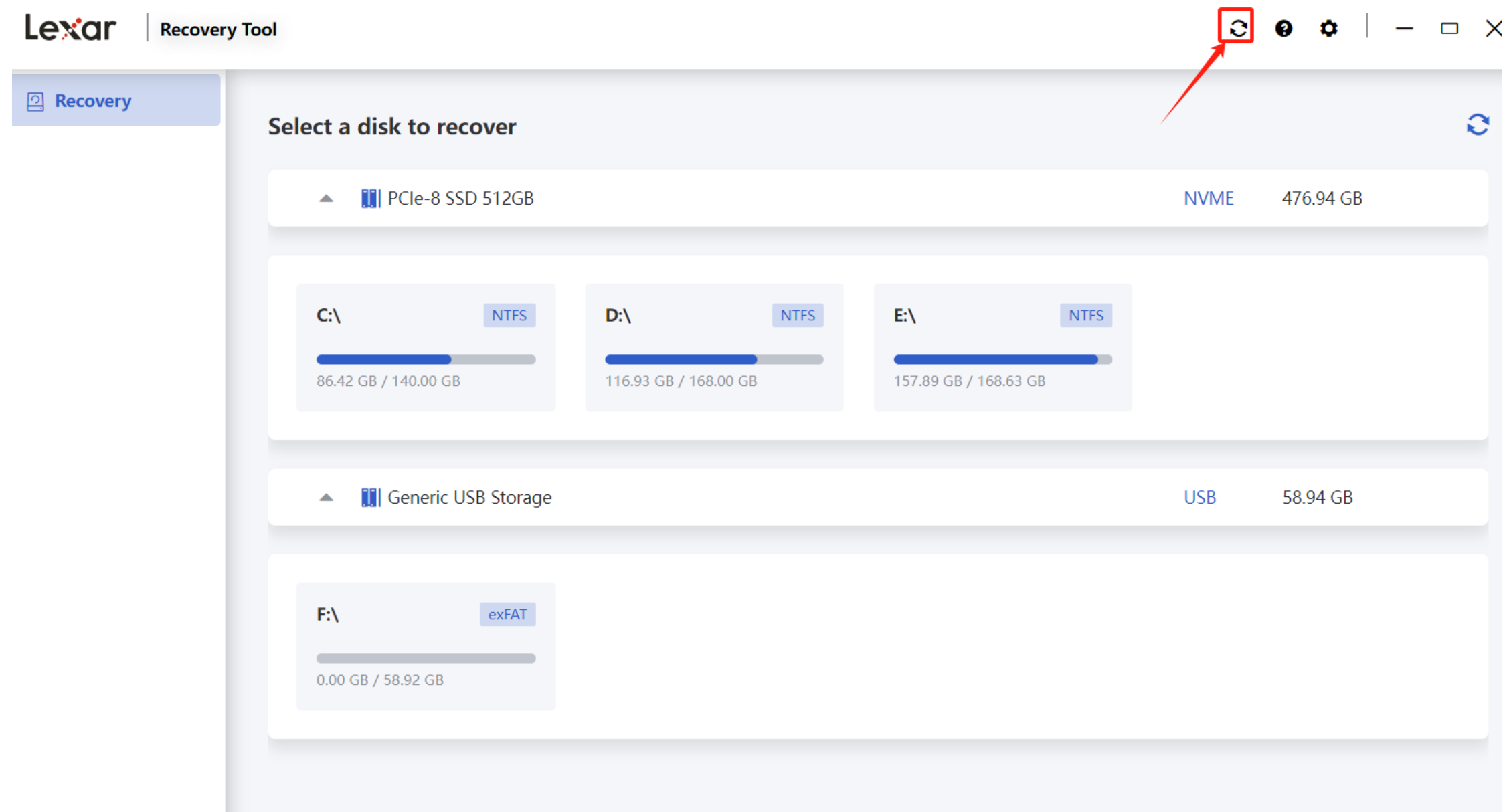
⚠ Note: Before using the Lexar Recovery Tool software, the success rate of recovering your files greatly depends on how the storage device is used, and whether there were any new written data after the accidental deletion. Do not continue to work on the storage device with the lost data on it!

- 1) You should not continue to use the disk which contains the accidentally deleted files.
- 2) Do not use operations such as copy, cut, or paste on the disk.
- 3) The more actions that have been done on the disk, the lower the success rate of recovery.
- 4) If recovery of lost data is needed, please do not defrag the disk or execute any tool that can possibly do further damage to the disk. Otherwise, it could erase the data of the file on the disk that you want to recover.

4、 How to Update the Software

1. Click on the update icon in the top toolbar to check for software updates.

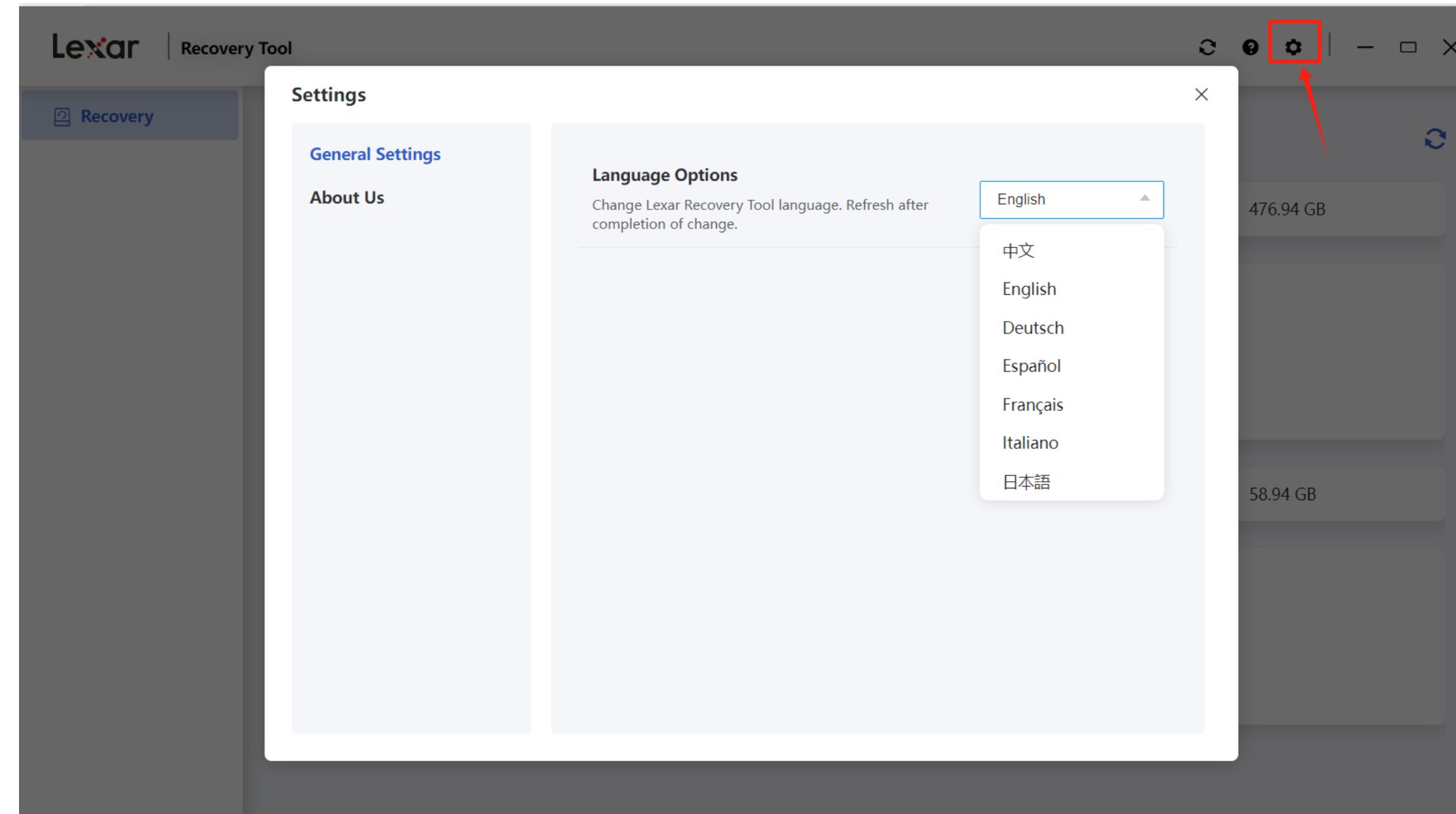
2. If there is a new version available, click on the update button to download the software package for updating.



Note: After the update is completed, a software restart is required and the current file scanning results will not be retained.

5、 How to Change Software Settings

1. Click on the settings icon in the top toolbar to access the language settings for the software interface.



6. Compatibility

1. Supported operating systems.

Windows	macOS
Windows 7 and above versions.	macOS 10.15 and above versions.

2. Supported file systems FAT32, exFAT and NTFS

3. Supported file formats for recovery

Camera Brand	Canon	Nikon	Sony	Fujifilm	Lumix	Olympus	Ricoh	Leica	HP	Pentax	Samsung
File Format	CR2/CR3	NEF	ARW	RAF/MOV	RW2	OFR	DNG	DNG	BRAW	MOV	SRW/MP
Whether to Support Recovery	✓	✓	✓	✓	✓	✓	✓	✓	✓	✓	✓

Photo	Document	Video	Audio
JPG / TIF / PNG / BMP / GIF / PSD CR3 / DNG / CR2 / ORF / RAF / ARW / WMF / RW2 / ICO / SRW	DOC / DOCX / XLS / XLSX / PPTX HTML / ZIP / RAR / 7Z / WMF / PDF	AVI / MOV / MP4 / 3GP / WMV / ASF / WEBM / FLV / SWF / MPG / MKV / RM / RMVB / VOB	AIF / M4A / MP3 / WAV / APE FLAC / OGG / ADT / WMA / MID

4. Supported data sources or storage devices for recovery Lexar Recovery Tool supports Lexar storage devices, including Lexar memory cards, USB flash drives, SSDs, and PSSDs. It can help recover accidentally deleted files, formatted data, lost partitions, and corrupted file system headers (such as FAT tables, \$MFT tables), allowing you to retrieve important information.

5. Unsupported situations for recovery.

- Disk files being filled or replaced, such as writing files to the card after formatting or deleting.
- Encrypted disk.
- Unable to mount disk.
- Disk with assigned disk letter but no capacity.
- Disk can be mounted but displays abnormal capacity, such as 7.61GB, 7.40GB, 2GB, 1GB, 32MB, etc.
- Full formatting (Low-level formatting actions to the system).
- Disk partition adjustment, such as dividing one partition into two, three, four, etc.
- Disk infected with malware.
- Physical damage to the disk, such as hardware board or main chip damage.
- CFexpress cards, SSDs, solid-state USB drives, and portable SSDs with Trim commands enabled.

7、 Solutions for Issues

Q: Can my data be fully recovered?

A: We cannot guarantee one hundred percent recovery of your data, but in most cases the data can be recovered normally using our software.

Q: I have recovered the file, but I am unable to open it?

A: When this situation occurs, it could be due to the following reasons:

1) The file has been corrupted

After a file has been deleted, it can be corrupted or overwritten by another file. Defragmentation, virus attacks or hacker activity will cause the file to be corrupted.

2) Fragmented files

Some large files are stored in separate sectors on the hard drive, since they are too large to be allocated to continuous sectors of the storage space. When the data from one or more sectors has been deleted, recovery is very difficult. Even if the initial address is accessible, the address information of the erased data is often lost.

Q: How long does data recovery normally take?

A: It depends on the size of the storage space and the size of the data. The larger the data, the longer it will take; inversely, the smaller the data is, the shorter it will take.